

GCSE  
Information  
Evening  
*Class of 2030*





# Staff: Contact Details

**Ms Bloxham:** Director of Learning for Year 9

All student enquiries

[bloxhamk@cfbs.islington.sch.uk](mailto:bloxhamk@cfbs.islington.sch.uk)

**Ms Kennedy:** Assistant Headteacher KS3

[kennedyj@cfbs.islington.sch.uk](mailto:kennedyj@cfbs.islington.sch.uk)

**Ms Harries: Deputy Headteacher:** Learning and Curriculum

[harriesa@cfbs.islington.sch.uk](mailto:harriesa@cfbs.islington.sch.uk)

**Mr Sharp:** Faculty Leader for Humanities

[sharpj@cfbs.islington.sch.uk](mailto:sharpj@cfbs.islington.sch.uk)

[Info@cfbs.islington.sch.uk](mailto:Info@cfbs.islington.sch.uk)

# Tonight's Event

## **Timeline for Year 9**

- Examinations
- Access arrangements /SEND
- Central Guarantee – the conditions for excellence
- Central Baccalaureate

## **Timeline for GCSE and Beyond**

- GCSE's at CFBS
- Sixth form / College
- Universities – super selective etc.

## **Option Courses**

- History
- Geography
- Religious Education
- Music
- Drama
- Art
- Design and Tech
- Food Tech
- Comp Sci
- Business
- PE



# Timeline for Year 9

**12th Jan – AP2**

**27th Jan – GCSE Options Event**

**24th Feb – Parents Evening AP2**

**24th March - Options Choices Submitted**

**June – GCSE Options Confirmed**

**29th June – AP3 \* class grouping for Year 10**

**Final KS3 Report AP3**

**Graduation**



# Timeline for Year 10 and 11

**Sept 2026: GCSE Targets Set**

**AP 1 – 3 – GCSE Mock Exams**

**June 2027: RE GCSE**

**Sept 2027: Y11 begins**

**Jan 2028: Sixth Form Interviews \* 2 years today**

**Feb 2028: Mock Exams**

**May 2028: GCSEs Begin**

**August 2028: GCSE Results**



# What other results will you get at GCSE?

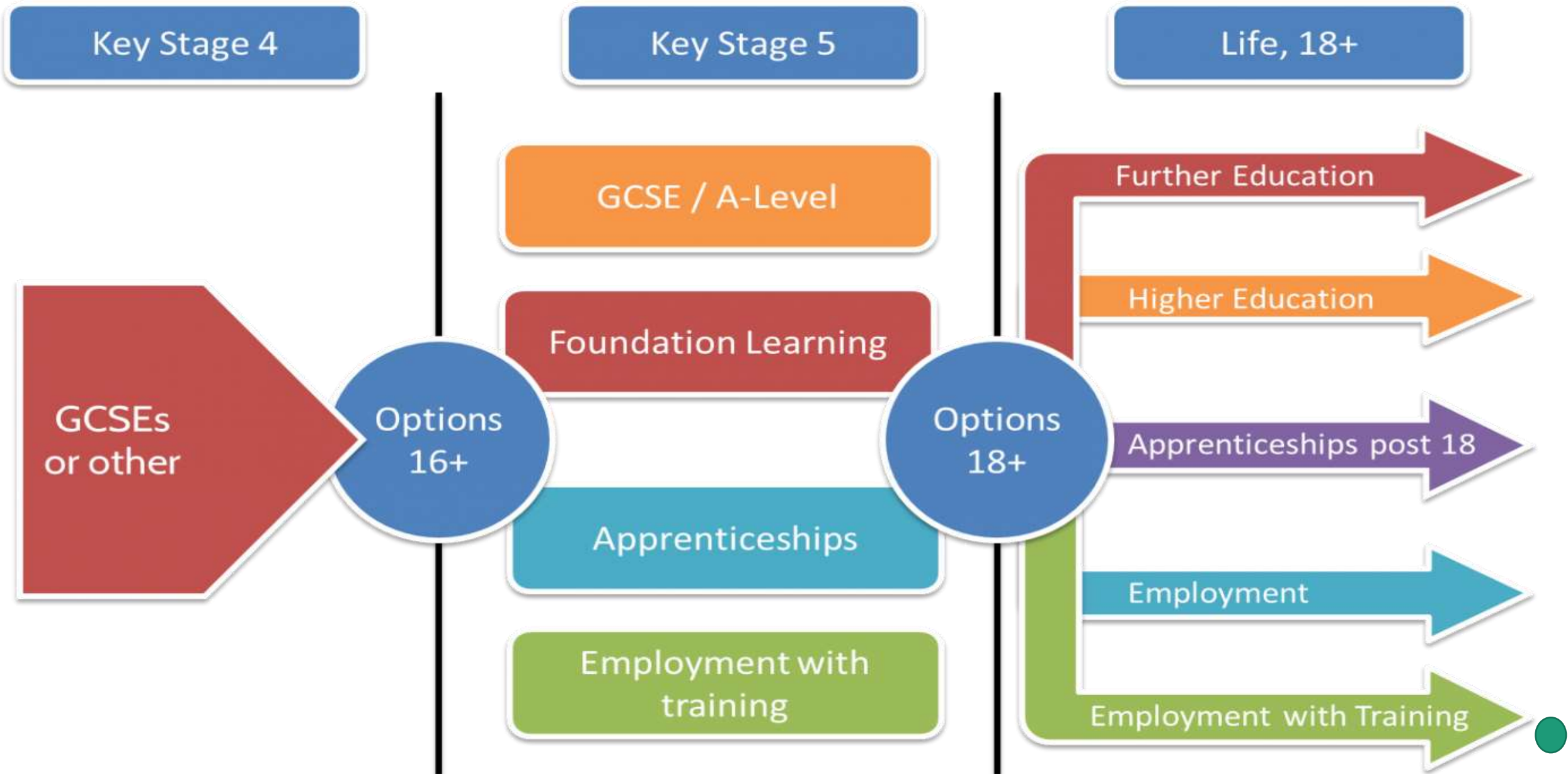
**Progress Score:** this is the progress made since sitting your KS2 SATs

**Average Point Score across your GCSEs**

eg: 7.5 is the average point score to enter CFBS Sixth Form.



# Key Stages





# How Do GCSEs Shape Your Next Step?

GCSEs are Level 2 qualifications.

GCSE subjects and grades are considered when applying for your employment and education.

You must achieve a certain grade at GCSE to gain access to Level 3 / Key Stage 5 options. This requirement varies significantly.

Eg: Grade 7 – Access to a wider range of options at Level 3 and Level 4 (University Level)

Grade 4 – English and Maths or students repeat the examination ●



# After GCSE - Level 3 Options

## A Levels

- Study 3 subjects
- Classroom based
- Lasts for 2 years
- Level 3
- Traditional qualifications based on exams

## Vocational Courses

- Study one main subject area
- Related to a particular industry
- Work experience
- Available at different levels to suit your ability
- Opportunities to put theory in practice
- Continuous assessment throughout the year

## Apprenticeships

- Varies in length from one to six years
- From intermediate (GCSE equivalent) to degree level
- **Combine on-the-job training with classroom learning**
- You will earn at least national minimum wage while you train
- Majority of your time is in work
- Study 1 day a week

## T Levels

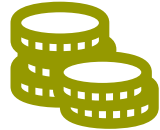
- Lasts for 2 years
- Classroom and workplace learning
- Designed in partnership with employers

# Example of courses available at a college

---



A Levels



Accounting



Animal Care



Art and Design



Apprenticeships



Business Studies



Childcare



Construction



Counselling



Digital & Computing



Engineering



English and Maths



ESOL



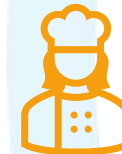
Foundation Learning



Hair and Beauty



Health & Social Care



Hospitality &  
Culinary



Music Production



Optics



Performing arts



Public Services



Science & Forensics



Sport and Fitness



Travel and Tourism



# How Do GCSEs Shape Your Next Step?

## **Level 4 Qualifications : University**

Entry requirements for university in the UK vary with each institution. However, there are some general requirements universities agree on:

- **At least three subjects must be taken at A Level**
- **Most courses will want any students to have at six GCSEs at Grade 5 and above, especially English and Maths.**
- **Portfolio work is important if applying for a Creative Arts course.**
- **Universities can be selective or super-selective e.g. higher entry requirements**



# How Do GCSEs Shape Your Next Step?

## Level 4 Qualifications : University

- Universities are ranked in how challenge their course is and the quality of their education. These rankings are different for each course.

E.g. A University which is well ranked for Nursing or Sports Science may not be as well ranked for Maths.

- Students wanting to go to the highest ranked universities must gain GCSEs at 7, ideally 8-9s to gain a competitive advantage

E.g. Oxford, Cambridge, London School of Economics, Imperial College





# Supporting Success: Access Arrangements for GCSE



## WHAT ARE ACCESS ARRANGEMENTS?

- Access arrangements allow students with specific needs, such as **special educational needs** or disabilities, support in an examination.
- They allow students to access the exam **without changing the demands / questions of the exam.**



# Supporting Success: Access Arrangements for GCSE



## WHAT ARE ACCESS ARRANGEMENTS?

Examples of an access arrangement:

- A reading pen
- Extra time
- A prompt
- A separate room



# Supporting Success: Access Arrangements for GCSE



## HOW WILL THE PROCESS START?

- This AP3 we refer students to the SEND team.
- Parents will be made aware of the status of their child's application at the Year 10 Curriculum Evening in September 2026.
- The SENCo will work with teachers and the student to identify possible arrangements.
- Various access arrangements are available. For example, support for students who have difficulties with reading, writing, speed of working or concentration.
- Not all students with additional needs will require access arrangements. This depends on whether their difficulty affects their access to exams. Additional needs or a diagnosis alone do not entitle a student to access arrangements.



# Access Arrangements: Approval Routes

Your son has a diagnosed medical condition (ADHD, ASC, SLCN needs, etc.)

**YES**

- Medical report required
- Samples of evidence provided by teachers
- Forms will be completed by SEND team

**NO**

- Samples of evidence provided by teachers
- Assessment required by our assessor in school (two low scores required)
- Forms will be completed by SEND team



# Access Arrangements: Contact details and information

- **SENCO**

Ms Lafavergeres [lafavergesp@cfbs.islington.sch.uk](mailto:lafavergesp@cfbs.islington.sch.uk)

- **Deputy SENCO and Assessor**

Ms Zounis [zounisa@cfbs.islington.sch.uk](mailto:zounisa@cfbs.islington.sch.uk)

- **JCQ – Joint Council for Qualifications**

<https://www.jcq.org.uk/exams-office/access-arrangements-and-special-consideration/regulations-and-guidance/>



# What to consider when choosing your GCSEs ?

- 1. Attainment:** to achieve as high a grade as possible in each subject.
- 2. Access to your pathway:** a mix of subjects which combine together for your chosen pathway.  
Eg: if you are interested in international economic development you may want to choose Geography and Business.
- 3. Ability to manage:** consider the combined workload.  
Eg: Will you take on a subject which requires NEA to be completed.



# Non-Exam Assessment:





# What to consider when choosing your GCSEs ?

- 1. What am I interested in?** Think big: what field / role or industry might you like to work in.
- 2. What pathways might this lead to?** Consider courses you may take Level 3 (after GCSE) & Level 4 (18+)
- 3. What am I good at / what is my current grade? What is my current grade in similar subjects?**





# What to consider when choosing your GCSEs ?

## 4. How do these potential subjects combine together?

- How many items of non-examined work vs how many exams
- Is there a subject I could keep as a hobby but not study at GCSE eg: a sport I enjoy but not take on PE GCSE
- Are there overlapping skills eg: Computer Science and Maths

## 5. Rank the subjects

**We do our very best to provide you with your exact choices.**

Still, we require you to choose back up subjects just in case we can't provide you with your exact choices.



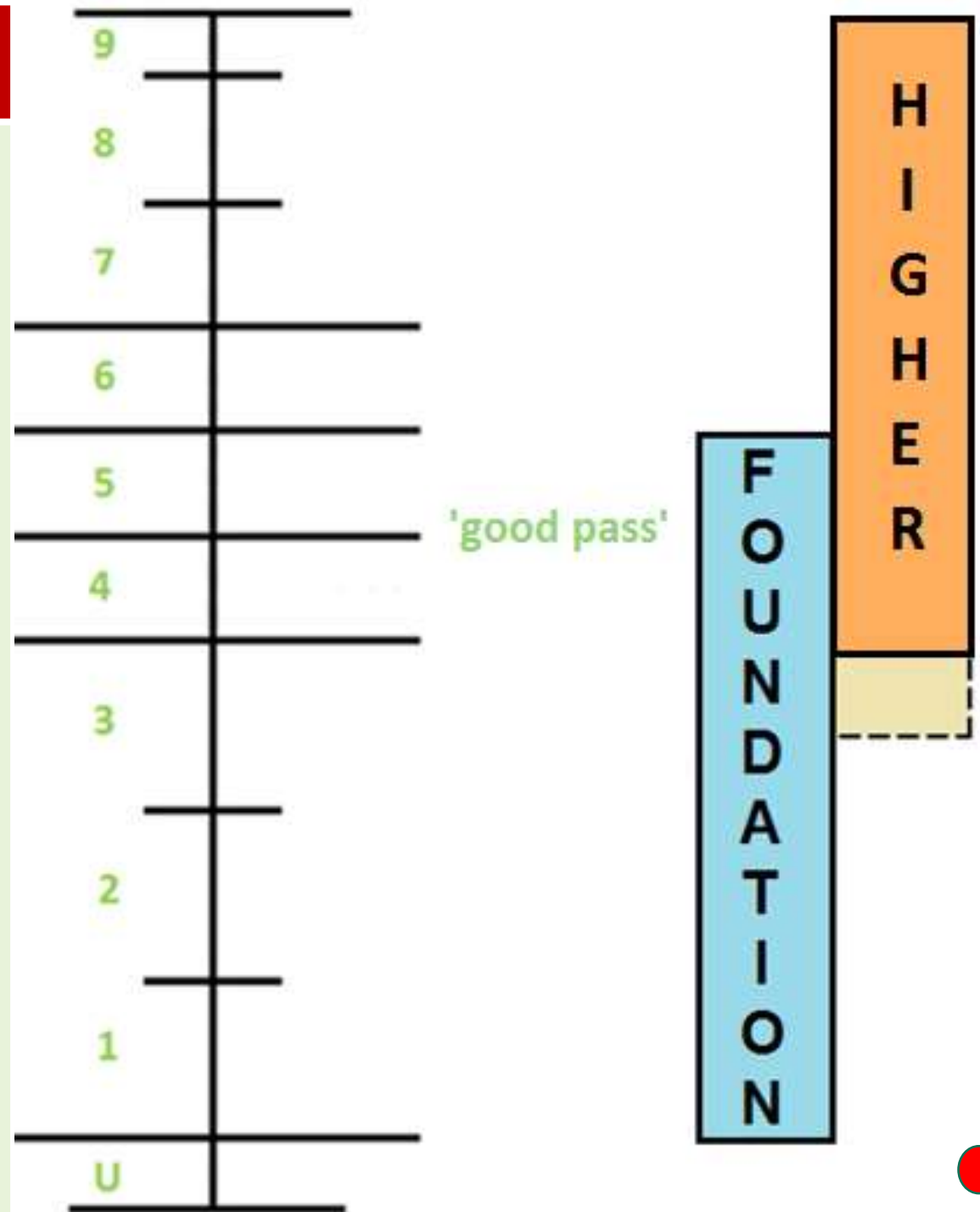
## Maths: Foundation/Higher (G4+)

Maths GCSE has two exam options. You do not select this; it is based on your previous maths attainment.

If you study **Higher Maths**, you can get a grade 4-9. It is a more challenging exam.

If you study **Foundation Maths**, you can get a grade 1-5. It is considered a less complex exam, as you will study less algebra.

You must pass Maths GCSE, or you repeat. To access Maths A Level you need a 7+.



## Combined Science

Two GCSEs qualifications.

A blend of biology, chemistry and physics; less content/detail than separate sciences.

Eg: your 2 Science grades are equal or 1 up/down

Combined Science 5:6

Combined Science 6:6

You can access Science A Level with combined Science if you gain above a 7

## Triple Science

You study three separate GCSEs.  
You study each science in more detail.

Biology 9

Chemistry 8

Physics 7

These grades are not linked

Combined Science and Triple Science are important to go into industries such as Medicine, Dentistry etc.



**The course is assessed by two exams in May & June 2027 / Year 10.**

**At CFBS, we complete this course in Y10 to ease the pressure on students in Y11.**

**Students should keep all RE workbooks that relate to the topics below:**

- Christianity – Beliefs, teachings and practices
- Islam – Beliefs, teachings and practices
- Religious, philosophical and ethical studies
- Religion and Life
- The existence of God and revelation
- Religion, peace and conflict
- Religion, human rights and social justice



## Language

Students complete the GCSE in the language they have been studying since Y7.

Eg: French, Spanish, Mandarin

These subjects are part of the English Baccalaureate and are considered examples of excellence by Sixth Forms and Universities.

Languages can be combined with university courses and support study abroad.

## 'Community' Language

Students can complete the GCSE in another language they are fluent in. They must be able to listen, speak, read and write to a high level.

Examples:

- Arabic
- Polish
- Turkish
- Japanese

This is in addition to their CFBS language. Students need to submit their 'community' language on their GCSE options form.





# GCSE Option Choices:

**English Literature**

**English Language**

**Maths**

**Science (Triple or Combined)**

**Language: French, Spanish,  
Mandarin**

**Students choose three  
subjects:**

- **Humanities: History, Geography, Business Studies**
- **Creative Arts: Art, Drama, Music**
- **Technical : Technology, Food Technology, Computer Science, PE, IT (vocational)**



# GCSE Geography

## Physical Component

37.5% of the course, 1 ½ hour examination

- **Changing Landscapes of the UK**
- **Weather Hazards and Climate Change**
- **Ecosystems, Biodiversity and Management**

## Human Component

37.5% of the course, 1 ½ hour examination

- **Changing Cities**
- **Global Development**
- **Resource Management**

## Geographical investigations

25% of the course, 1 ½ hour examination

- **Fieldwork** – this involves two field trips
- **UK Challenges**



Geography has links with main other subjects at GCSE, here are some of them...

GCSE Geography  
with...

Career directions

Art and design  
technology

Architecture, cartography,  
landscape design

Science

Agriculture, environmental  
health, nature  
conservation

History

Law, archaeology

Modern foreign  
languages

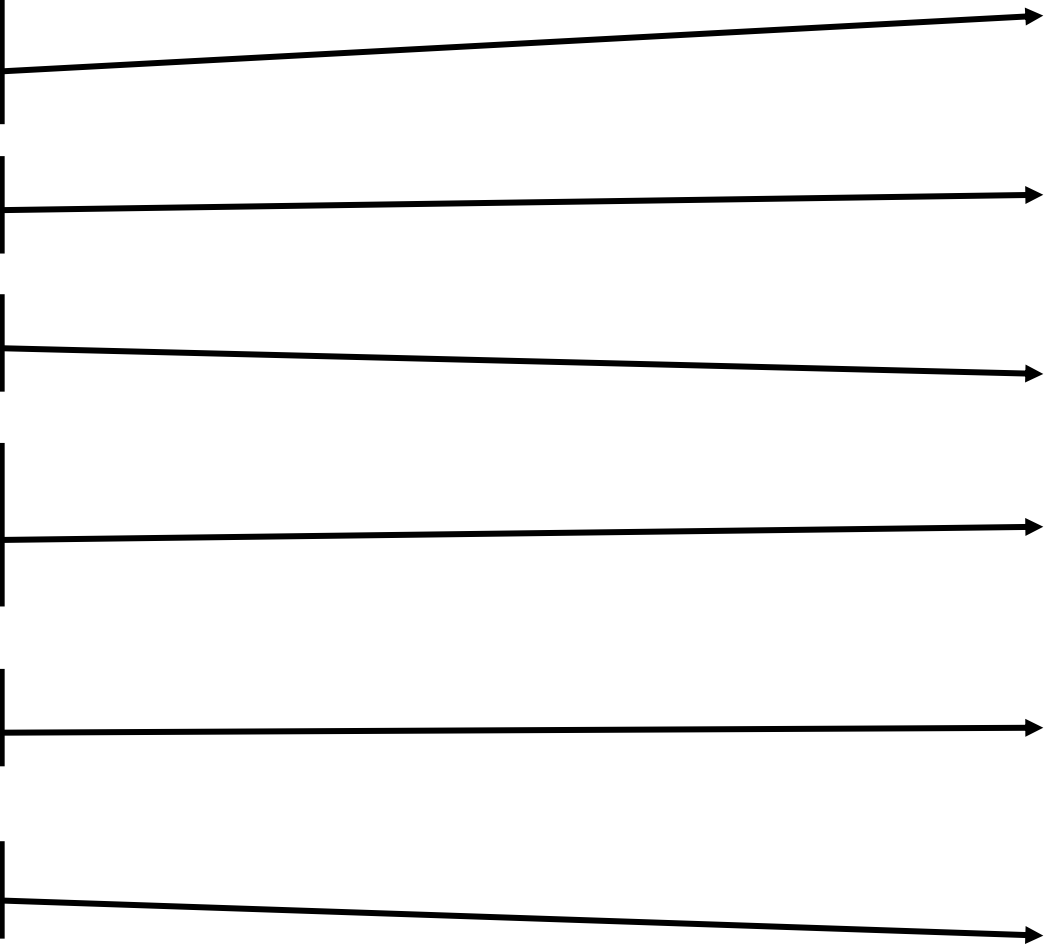
Leisure and tourism,  
overseas marketing

Maths

Civil engineering,  
meteorology, mining,  
navigation

Business studies

Business, banking and  
finance





# Pathway – GCSE, A level, degree

- A Level - For A Level you will deepen your understanding of geography with a more intensive study of key elements which will extend your geographical understanding beyond the topics studied at GCSE.
- University: With about 80 universities offering geography degrees across the UK, there is a wide range of choice.
- Universities generally provide courses in both physical (BSc) and human (BA) geography.
- No matter what direction you choose within the subject, you will gain a wide range of very employable and transferrable skills and attributes.

Studying Geography at the GCSE level involves a diverse curriculum that bridges the natural and social sciences. It requires a mix of technical skills, field research, and broad conceptual understanding.

## **Key Challenges**

- **Case Studies:** Students must memorise specific facts, figures, and dates for multiple real-world examples
- **Synoptic Thinking:** the ability to connect ideas from across the entire physical and human geography curriculum to evaluate a single contemporary issue.
- **Key Terms**
- **Data and Map Interpretation**
- **Extended Writing:** Papers include 8- or 12-mark questions that require structured, well-evidenced arguments.

## **Required Strengths and Skills**

- **Numerical and Statistical Proficiency**
- **Strong Analytical and Critical Thinking**
- **Effective Communication (Written)**
- **Precise Factual Recall**



# GCSE History

## Topics

**Paper 1** - The development of Warfare: 1250 to the modern day including WW2 in London. (1hr 20mins)

## Paper 2 –

- The Cold War 1941-1991.
- Medieval monarchs: King Richard and King John.

## Paper 3 –

Germany 1918-39. (1hr 20mins)

- 3 exams at the end of Y11.
- Varying From 1 hour 20 mins to 1 hour 45 mins in length.
- Mix of source based and essay style questions.





# Subject links

## At GCSE

History works well with:

- English
- Geography
- Media Studies
  
- And also Science and Languages

## At A level

History complements:

- English
- Geography
- Government and Politics
- Economics
- Law
- Philosophy



# Pathways KS5 and beyond

- **There are a vast range of history courses at degree level. Most Russell Group Universities run a history course**
- **This is also a popular route into Politics, Law, International Relations and other Humanities subjects.**
- **Historians often work in government, the media or management of all types of industry.**

Studying History GCSE is a demanding but highly rewarding subject that requires students to balance significant factual recall with analytical and critical thinking skills. Success depends heavily on being able to interpret sources and construct sophisticated arguments under exam conditions

## **Key Challenges**

- Large amount of content
- Source and Interpretation Analysis
- Extended Writing: History exams are often essay-heavy, requiring students to plan and write structured, analytical arguments

## **Required Strengths and Skills**

- Strong Analytical and Critical Thinking:
- Effective Communication (Written):
- Precise Factual Recall: While analysis is key, it must be supported by accurate recall of specific names, dates, events, and figures.

# Religious Studies GCSE

## Paper 1:

**1 Hour 45 minutes**

- Christian Beliefs
- Christian Practices
- Islamic Beliefs
- Islamic Practices

## Paper 2:

**1 Hour 45 minutes**

- Theme A: Relationships & families
- Theme B: Religion and Life
- Theme D: Religion, Peace & Conflict
- Theme F: Religion, Human Rights & Social Justice



# Subject links

## At GCSE

Religious Studies works well with:

- English
- Geography
- Media Studies
- Science
- Languages

## At A level

Religious Studies complements:

- Sociology
- English
- Geography
- Government and Politics
- Economics
- Law
- Philosophy



# Pathways KS5 and beyond

- There are a vast range of Religious Studies courses at degree level.
- This is also a popular route into Theology, Sociology, Politics, Law, International Relations and other Humanities subjects
- Oxford University has a department for Theology and Religion

Studying Religious Studies (RS) at the GCSE level in 2026 involves balancing deep theoretical knowledge with high-level evaluative skills. The subject is valued by employers for developing critical thinking, ethical awareness, and communication

## **Key Challenges**

- Abstract Theoretical Content
- Memorising Sacred Texts
- Extended Writing: 12- or 15-mark essay questions require students to construct balanced, well-reasoned arguments under strict time pressure.
- Volume of Content

## **Required Strengths and Skills**

- Critical Thinking and Evaluation
- Literacy and Communication
- Precise Recall



# Business

- **Investigating Small Business**
- **Marketing**
- **Sales**
- **Enterprise**
- **Building Business**

## **100% Written Exam**

Sales Marketing Economics Finance Technology Healthcare

- **Business language** - Over 200 key terms, formulae and concepts
- **Application, Analysis and Evaluation** skills –ability to apply business theory to form complex arguments in different business situations
- **Focus** on exam success – practice, timing, technique



# Computer Science :

## Computer Science:

- **Computer systems**
- **Computational thinking eg: Algorithms & Programming**

100% Written GCSE Exam

Technology   Economics   Finance   Law   and   beyond



# Creative Arts:

## Art:

60% NEA portfolio      40% Creative exam

## Design & Technology:

50% NEA    50% Written Exam

## Drama:

40% NEA 20% Performance      40% Written Exam

## Food & Nutrition:

50% Food Prep + report      50% Written Exam

## Music:

60% NEA    20% Listening    20% Creative task





# Music:

- **Western Classical Music**
- **Music for Ensemble**
- **Film Music**
- **Pop, Rock and Fusion Music**

**Music tech, music industry, musician  
or non-musical career**

- 2 Performances: solo & ensemble @ Grade 3 standard. Use your MiSST instrument, or a different one!
- 2 Compositions. You will be mentored throughout this process.
- Appraising Test - sat at the end of Y11 and worth 40% of your overall grade.





# Drama:

- **Directing Drama**
- **Set Design**
- **Performance**
- **Lighting and Sound**

- **Devising Drama**
- **Devised Performance**
- **NEA portfolio**

## **Theatre Industry**

**Any industry where presentation and public speaking is important**



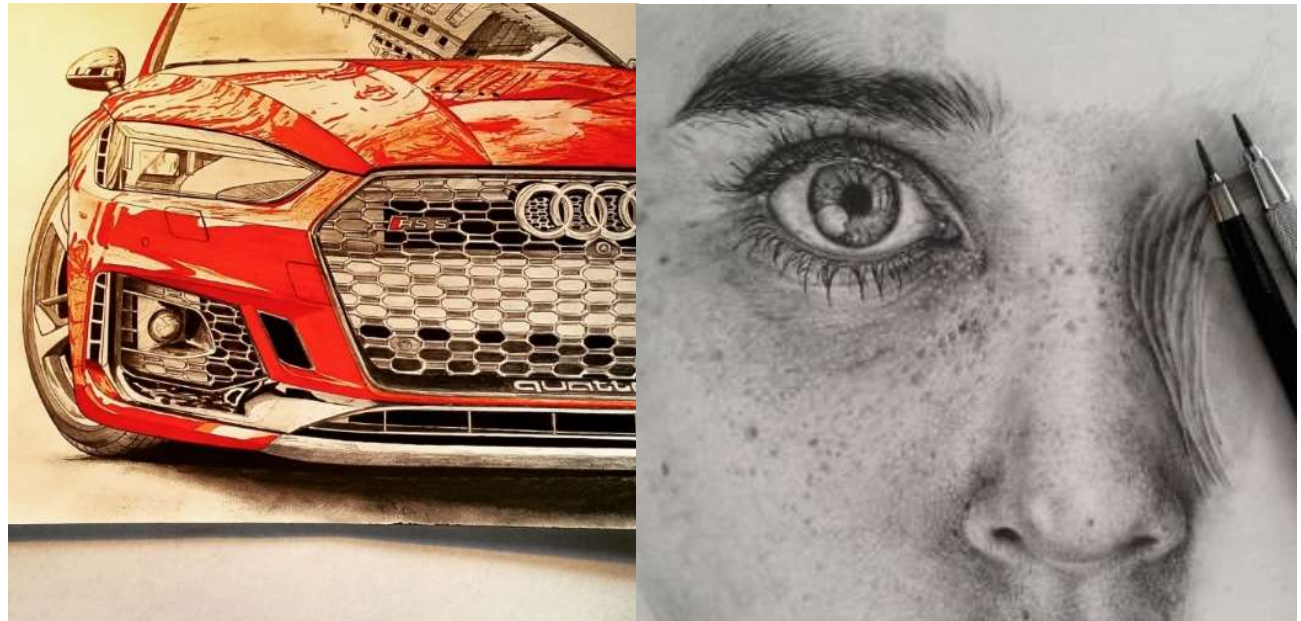


# Art:

- **Y10 is focused on developing skills of painting, drawing, collage, mixed-media, textiles**
- **Students then respond to themes**
- **Create work inspired by Artists**

**Creative industries, design industry, architecture.**

- **Response to Theme 1 : create a portfolio**
- **Response to your own Theme: create a portfolio**
- **Timed exam conditions piece**





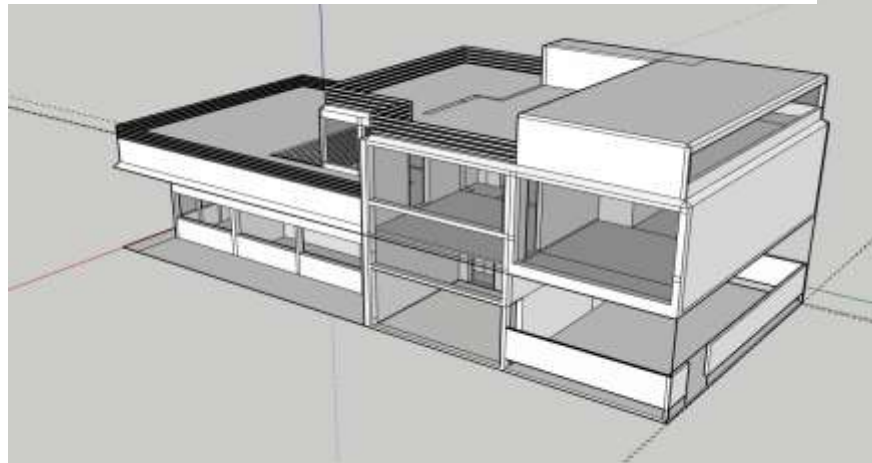
# Design and Technology

- You will be trained and have access to state-of-the-art modern facilities and equipment
- You will be trained on industry standard 3D modelling software and digital fabrication such as laser cutters and 3D printers.

How are you assessed?

Your final grade is  
50% A portfolio - design and make project  
100 marks

50% Exam  
100 marks



# Pathways and careers

**Design and Technology  
GCSE**

**A –Level**  
→

**3D Design /  
product design  
A Level**

**Maths  
Physics  
IT/ Computer  
Science**

**Business studies  
Languages  
Art  
Geography**

**ENGINEER**

**Animator  
Graphic 3D  
Design**

**Product  
Designer  
Product  
Manager**

**Architecture  
Landscape  
Designer**

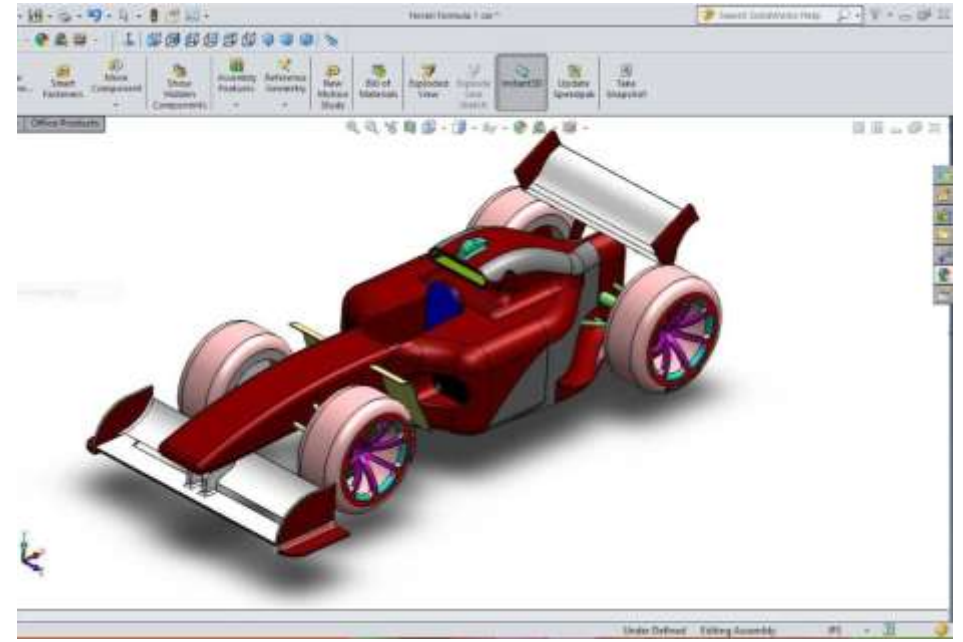
**Civil  
ENGINEER  
Automotive  
Engineer**

**Entrepreneur  
Inventor**

- Engineering
- Architecture
- Built environment industry / construction
- Trades eg: woodworking
- Design :
- Animation / graphic design
- Product design
- Scientific design



Year 10 Speaker project





# Food Tech:

- Basic mixture, recipes and cooking skills
  - Principles of nutrition, diet and good health
  - Cultures and cuisine
  - The science of cooking food
  - Food provenance and food waste
  - Factors affecting food choice
- 50% - 1 hour 45-minute written exam
  - 50% - Non Examined Assessment :
    - NEA 1 – 15% - Practical science based investigation
    - NEA 2 – 35% - Practical Assessment cooked dishes



**Nutrition, food industry, hospitality / restaurants hotels and events, cooking or non-cooking career**

# Further Education

## Level 3:

- A Level Food Science and Nutrition
- Courses in Hospitality or Food Science

## Level 4:

- University Degree in Nutrition Food Science
- Apprentices

<u>CAREERS</u>	* Food technologist	* Dietician/nutritionist
* Food writer	* Food stylist	* Food photographer
* Chef	* Catering manager	* Restauranter
* Supermarket food buyer	* Quality assurance manager	* Food public relations/marketing
* Quality assurance manager	* Food scientist	* Recipe developer/food product development



# PE:

## Physical Education:

- Physiology / biology
- Training methods
- Personal Exercise Plans
- **Two sports required**

Healthcare Industry

Sports Industry

Public Service

30% Practical Assessment

60% Written Exam

10% NEA





# Timeline for Year 9

**12th Jan – AP2**

**27th Jan – GCSE Options Event**

**24th Feb – Parents Evening AP2**

**24th March - Options Choices Submitted**

**June – GCSE Options Confirmed**

**29th June – AP3 \* class grouping for Year 10**

**Final KS3 Report AP3**

**Graduation**



## Year 9 AP3

**Cumulative:** the assessment includes your son's learning from across the whole of Key Stage 3.

**Mastery:** this assesses how well your son has mastered the knowledge and procedures they have been gradually learning across Key Stage 3.

**Next steps:** this assessment allows us to understand what challenge, support and guidance is needed for students, ensuring they have a solid foundation of learning to start Key Stage 4. This is an important step to success in your GCSEs



## Year 9 AP3

- ✓ This will be the **most ambitious assessment** yet e.g. higher tier Maths
- ✓ **Habit-building** for Key Stage 4 and 5:
  - Extended periods of thinking and writing
  - High levels of organisation required
  - Exam conditions
  - High intensity days with multiple assessments



# Year 9 AP3

## **How will I do well?**

Attendance, attention and homework!

- ✓ Previous content is woven into every lesson.
- ✓ Be present and active in every lesson.
- ✓ The homework is the revision.



# The Central Guarantee:

1. Attendance
2. Homework
3. Excellent behaviour

STRONG

TEAMWORK





# 1. Attendance

**Attendance has a direct impact on student progress.**

**We register attendance at **AM: 8:50-9:20** and PM 12:30.**

- Every lesson counts**
- At CFBS we teach every lesson – from the first day to the final day of term**

<b>0 days off school</b>	<b>All lessons attended</b>	<b>100%</b>	<b>Exemplary</b>
<b>2 days off school</b>	<b>14 lessons missed</b>	<b>98%</b>	<b>Excellent</b>



# Attendance: Illness / Medical

**We can send students home if they become ill.**

**Mild Illness requires students to attend school. Eg: headache / cough or cold.**

[Is my child too ill for school? - NHS](#)

## Appointments

- Please book/request appointments **from 2.30pm** onwards, if it must be in the school day.
- Send proof / confirmation letter to the DOL as early as possible



# 1. Attendance: 'G' code

**Holidays in term time are unauthorized / 'G' code**  
**We will proceed using government guidelines by using the penalty notice process.**

## **Who will receive a penalty notice?**

15. Penalty notices will be issued to the parent/s with day-to-day responsibility for the pupil or the parent/s who have permitted the absence, regardless of which parent has applied for the leave of absence.
16. A penalty notice will be issued to each parent of each child:
  - whose attendance is poor
  - that was taken on an unauthorised term time holiday or term time leave
  - who in the case of exclusion, is present in a public place during the first 5 days.



# 1. Attendance

**Stage 1 – Less than 95% = Attendance Awareness**

**Stage 2 and 3 – Less than 90% = Attendance Panel**

**Stage 3 – Awareness + Panel + Referral to the Local Authority**

**Referrals to external agencies eg: CAHMS**

**Penalty Notice**

**Attendance - Central Foundation Boys' School**



# 2. Excellent Behaviour:

Good decisions and efforts = Merits

Politeness

Outstanding Oral Contribution

Kindness

Outstanding Reading Aloud

Community Spirit

Outstanding Sports Performance

Outstanding Listening

Outstanding Written Work

Wrong choices and behaviour = Demerits

1<sup>st</sup>

Demerit

- Warning - make a change!

2<sup>nd</sup>

Demerit

- Warning – make a change!

3<sup>rd</sup>

Demerit

- Removed from lesson to protect the learning of others.
- 60 minute detention.



## 2. Excellent Behaviour:

Students who have better overall wellbeing often behave better at school.

Eg:

1. Limited Screen Time
2. Balanced diet and sensible break time snacks
3. 7 hrs Sleep
4. Bottle of water





# 2. Celebrating Excellent Behaviour

## Year 9 Graduation Ceremony: July 2026

### Central BACC



### Graduate with a Distinction



Attendance – 97%+



Punctuality – 0 Lates



Homework – 75%+



# How do students achieve the Central Baccalaureate?

Personal Project

80 hours of Co-Curricular

Knowledge / Lesson Attendance

2 clubs per week  
Projects  
Fixtures  
Performances  
Volunteering

CENTRAL FOUNDATION BOYS SCHOOL



*'Clubs are something that I look forward to every day'*  
**Mylo, 11C**



**What next?**

**Student Feedback / Parents' Evening**

**Final Options Choices Form**

**Assessment Point 3**



Submit your choices by 24th March



GCSE Options Form 2025-26

