



Welcome to Year 10 into 11 Success Evening 2017

“We must use time wisely and forever realise that the time is always ripe to do right.

When the water starts boiling it is foolish to turn off the heat.”

Nelson Mandela



Turning on the Heat (and Taking the Leap of Faith)



OUTLINE OF SUCCESS EVENING



- Year 11 Overview
 - Mr Dilley, Deputy Head KS4
- Characteristics of successful students
 - Ms Patel, Director of Learning



Aim of this evening:

For parents and students to have all the **revision** and **planning** materials and **information** required for each student to finish Year 11 having achieved their **target grade** in **all subjects**



An Overview of the Upcoming Year

Mr Dilley

Deputy Headteacher Key Stage 4



YEAR 11 SUCCESS EVENING



TERM 1		
Week	Date	Event
Week 4	Week beginning 25th September	Year 11 AP1 Assessments
Week 6	Week beginning 9th October 2017	Year 11 Predicted Grades sent home
End Week 7	HALF TERM REVISION AND INTERVENTION PROGRAMME	
Weeks 10 to 11	Fortnight beginning 13th November 2017	Year 11 PPE#1 Preparation and Revision
Weeks 12 to 14	Fortnight beginning 27th November 2017	Year 11 PPE#1



YEAR 11 SUCCESS EVENING



TERM 2		
Week	Date	Event
Week 16	4th January 2018	Year 11 PPE#1 Results Day
Week 17	11th January 2018	Year 11 Parents' Evening#1
		Predicted Grades and Report Issued
End Week 21	HALF TERM REVISION AND INTERVENTION PROGRAMME	
Week 22	Week beginning 19th February 2018	Year 11 PPE#2 Preparation and Revision
Weeks 23-24	Fortnight beginning 26th February 2018	Year 11 PPE#2 Preparation and Revision
Week 27	28th March 2018	Year 11 Parents' Evening#2
		Predicted Grades and Report Issued
End Week 27	EASTER REVISION AND INTERVENTION PROGRAMME	



YEAR 11 SUCCESS EVENING



TERM 3		
Week	Date	Event
Week 31	Week Beginning 8th May	Art GCSE Exam
		Music Creative Task GCSE
Week 32	Week Beginning 14th May	GCSE Exam Period
Week 33	Week Beginning 21st May	GCSE Exam Period
End Week 33	HALF TERM REVISION AND INTERVENTION PROGRAMME	
Week 34	Week Beginning 4th June	GCSE Exam Period
Week 35	Week Beginning 11th June	GCSE Exam Period
Week 36	Week Beginning 18th June	GCSE Exam Period



YEAR 11 SUCCESS EVENING



What is a Pre-Public Examination (PPE)?

- Formal exams for all subjects
- GCSE style papers and timings
- Marked and Moderated like GCSEs
- Results given in an award ceremony
- Take place week twice a year in late December and February
- 2 week revision period before each PPE session
- Prepare as if it were the real thing!



YEAR 11 SUCCESS EVENING

What is a PLC?

- A Personalised Learning Checklist
- Covers content of entire course
- Secure on all points = Grade 9
- Use as a revision tool / knowledge check for entire year
- RAG Rate = Red, Amber, Green
- Teachers use PLCs to assess where each student is



YEAR 11 SUCCESS EVENING



More Exams Than Ever Before

- Resilience
- Organisation
- Ability to Plan Ahead
- Dedication, Engagement and Commitment



YEAR 11 SUCCESS EVENING



But not just exams – Controlled Assessment and Practicals

- Art
- Business Studies
- Media Studies
- Drama
- Music
- PE
- Graphics
- Resistant Materials
- Food Technology

ALL COMPLETED BY FEBRUARY HALF TERM



YEAR 11 SUCCESS EVENING



Interventions – always based on AP data

- Full after school programme
- Saturdays from October
- Full programme every holiday
- We expect 100% attendance
- We will keep parents informed at every step



YEAR 11 SUCCESS EVENING



GCSEs Week 1

Day	Date	Morning Exam	Afternoon Exam
Monday	14/05/2018	Computing 1	
Tuesday	15/05/2018	FRENCH R&L	BIOLOGY 1
Wednesday	16/05/2018	PE 1	
Thursday	17/05/2018	CHEMISTRY 1	Computing 2
Friday	18/05/2018	FRENCH WRITING	PE 2 / DRAMA



YEAR 11 SUCCESS EVENING



GCSEs Week 2

Day	Date	Morning Exam	Afternoon Exam
Monday	21/05/2018		
Tuesday	22/05/2018	ENGLISH LIT 1	GEOGRAPHY 1
Wednesday	23/05/2018	BUSINESS 1 / ITALIAN R&L	PHYSICS 1
Thursday	24/05/2018	MATHS 1	
Friday	25/05/2018	ENGLISH LIT 2	



YEAR 11 SUCCESS EVENING



GCSEs Week 3

Day	Date	Morning Exam	Afternoon Exam
Monday	04/06/2018	HISTORY 1 / MEDIA	MEDIA STUDIES
Tuesday	05/06/2018	ENGLISH LANG 1	GEOGRAPHY 2
Wednesday	06/06/2018	SPANISH R&L	BUSINESS 3 / MUSIC 3
Thursday	07/06/2018	MATHS 2	
Friday	08/06/2018	ENGLISH LANG 2	HISTORY 2



YEAR 11 SUCCESS EVENING



GCSEs Week 4

Day	Date	Morning Exam	Afternoon Exam
Monday	11/06/2018	BIOLOGY 2	GEOGRAPHY 3
Tuesday	12/06/2018	MATHS 3	HISTORY 3
Wednesday	13/06/2018	CHEMISTRY 2	
Thursday	14/06/2018	SPANISH WRITING	RM / FOOD
Friday	15/06/2018	PHYSICS 2	



YEAR 11 SUCCESS EVENING



More Exams Than Ever Before

- Resilience
- Organisation
- Ability to Plan Ahead
- Dedication, Engagement and Commitment



YEAR 11 SUCCESS EVENING



Revision and Exam Preparation

Step 1: Learn the materials in class

Step 2: Use PLCs to check coverage of your knowledge

Step 3: Use Revision Guides and Flash cards to fill in gaps in knowledge

Step 4: Quiz – to support memory recall

Step 5: Learn and practise exam skills



YEAR 11 SUCCESS EVENING



What Must Students Do to Help Themselves?

1. Use, don't lose PLC Booklets
2. Buy revision guides
3. Attend interventions / revision sessions
4. Revise /do homework for 2 hours a night
5. Use Maths Watch, Tassomai, PIXL Maths App
6. Practise exam questions / get on exam board website
7. Attend revision sessions in half term/ Saturdays



YEAR 11

DIRECTOR OF LEARNING

MISS PATEL

YEAR 11 ATTENDANCE



Expectations:

- School target- 97%
 - Government target- 90%
- Statistics: 90% equates to a month of learning missed.
 - That is 120 missed lessons
 - 120 missed Interventions

Attendance Impact on Achievement



Research shows: “the greater the attendance the greater the attainment”

12 missed school days a year = an entire GCSE grade **DROP in achievement**

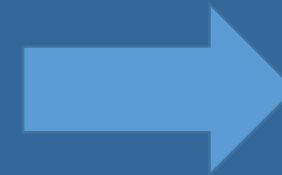
(Dfes).



Current year group attendance



<u>Group</u>	<u>% Attend</u>
10AZ	96.0
10CC	97.2
10SG	96.8
10HM	94.9
10JXB	96.0
10JV	96.2
10DS	96.9
10MM	96.6
Totals	96.6



Miss Patel works very closely with the school EWO in making sure students meet their school target.

Attendance - 100% in year 10 (33)



ABDUL HAFIZ Ahmad Kamal

ADESANYA Daniel

AHMED Foyez

AHMED Shahel

AHMED Yusuf

ALOM Mohammed

AZIZ Rastgon

BOJANG Abdou

CHOWDHURY Inaayat

CHUKWU Kevin

EDOIMIOYA Jordan

FINIIN Abubakar

JABRI Rami

KAMBALA Ilyas

KHAN Mohammad

MIAH Jabir

MIAH Syed

MILLS-CAMPBELL Deanietrea

MOHAMED Sadik

NARCI Mehmetcan

ONATEMOWO Boluwatife

POUGET Zia'Uddeen

SAYID Mohammed

SENGWAYO Christiaan

SIDDIQUI Imaad

TAHMID Mohammed

TOMKINS Isaaq

TRAYLEN Joseph

TURKSON Joshua

YAHIA Mohammed

YAHYA Umar

YASIN Yacoub

YEAR 11 PUNCTUALITY



- Valuable information is given out in assemblies and within the year 11 tutor programme.
- Punctuality report for students who are persistently late and a 5m PL.

100% Punctuality in Year 10 (22)



ABDUL HAFIZ Ahmad Kamal
ADESANYA Daniel
AHMED Foyez
ALOM Mohammed
FINIIN Abubakar
JABRI Rami
KAMBALA Ilyas
KHAN Mohammad
MIAH Jabir
MIAH Syed
MILLS-CAMPBELL Deanietrea
MOHAMED Sadik
NARCI Mehmetcan
ONATEMOWO Boluwatife
POUGET Zia'Uddeen
SIDDIQUI Imaad
TAHMID Mohammed
TOMKINS Isaaq
TRAYLEN Joseph
YAHIA Mohammed
YAHYA Umar
YASIN Yacoub



Students are rewarded
in every half term
rewards assembly.

Year 11 Behaviour



- Every time your son is placed on PL there is a loss of learning.
- This loss of learning will directly impact on their progress and achievement in a variety of subjects.
- If placed on PL, students will miss their Intervention. Students need to know that this is impacting very negatively on their achievement every time they are placed on PL.
- **Target= 0 PL's in year 11.**

Attitude to Learning



- An average attitude to learning indicates how well your son engages is in every subject.
- 1 Outstanding in class;
- 2 Good In class;
- 3 Concerns in class;
- 4 Very poor in class;
- **Our target is for every student to engage in class and average between 1-2.**

Homework in Year 11



- Homework detention unless every piece is completed.
- Parents will receive a text message on the day.

Target:

- Every single piece is completed from every student so students can focus purely on their intervention.

100% Homework completion in year 10 (17)



ADESANYA Daniel

AHMED Foyez

ALOM Mohammed

FINIIN Abubakar

KHAN Mohammad

MIAH Jabir

MIAH Syed

POUGET Zia'Uddeen

SIDDIQUI Imaad

YAHIA Mohammed

YAHYA Umar

YASIN Yacoub

KAMBALA Ilyas

ONATEMOWO Boluwatife

TAHMID Mohammed

TOMKINS Isaaq

TRAYLEN Joseph

Pastoral statistics in relation to loss of learning



- Central Foundation guarantee:
- Attendance- 97%
- Punctuality- 97%
- Behaviour- Excellent/Good
- Attitude to learning- Engaging in every subject.
- You will hit target grade in each subject if you achieve the above.

Year 11 Interventions



- Every student will attend every single Intervention
 - Saturdays, Half terms, Week days
- I will communicate with parents if there are any concerns.
- Private tuition must be arranged for 6pm onwards so that students can attend intervention.
- Medical appointments arranged around every Intervention.

Parental Communication

Miss Patel will call parents for:

- Attendance concerns;
- Punctuality concerns;
- Homework concerns;
- PL concerns;
- Behavioural Incidents;
- Intervention concerns in respect to achievement.



New English Specification

AQA English Literature
AQA English Language

Overview for 2017- 2018

Term	Texts	Examination/ Assessment
Autumn 1	19 TH CENTURY NOVEL LANGUAGE PAPER 1	S+L ENDORSEMENT LIT PAPER 1: SECTION B LANGUAGE PAPER 1 PPE
Autumn 2	LANGUAGE PAPER 2 POETRY	LANGUAGE PAPER 2 PPE
Spring 1	DNA LANGUAGE PAPER 1	LIT PAPER 2 PPE LANGUAGE PAPER 1 PPE
Spring 2	LANGUAGE PAPER 2 MACBETH	LANGUAGE PAPER 2 PPE LIT PAPER 1: SECTION A
Summer	REVISION	

What's changed?

- Graded from 9-1 not A*-C
- 100% exam - there is no course work component
- Everyone will sit the same papers – no separate foundation and higher papers
- Students cannot take text books into the exam with them
- They will have 2 language exams
- They will have 2 literature exams

LANGUAGE Paper 1

Students will be given an extract from a fiction text (a novel) that was written between 1800 (19th Century) and 2015 (21st Century)

This extract will be around a page long and will most often be:

- An introduction
- A description of Character/s
- A description of setting
- A significant event

Students will answer 4 questions on this extract

Paper 1 Section A: Sample question 4

Focus this part of your answer on the second half of the source, **from line 18 to the end**.

A student, having read this section of the text said: “The writer brings the very different characters to life for the reader. It is as if you are inside the coach with them.”

To what extent do you agree?

In your response, you could:

- write about your own impressions of the characters
- evaluate how the writer has created these impressions
- support your opinions with quotations from the text.

[20 marks]

LANGUAGE Paper 2

Students will be given two extracts from non-fiction texts that were written between 1800 (19th Century) and 2015 (21st Century)

These extracts will be around a page long and will most often be linked by theme or topic but written in different time periods

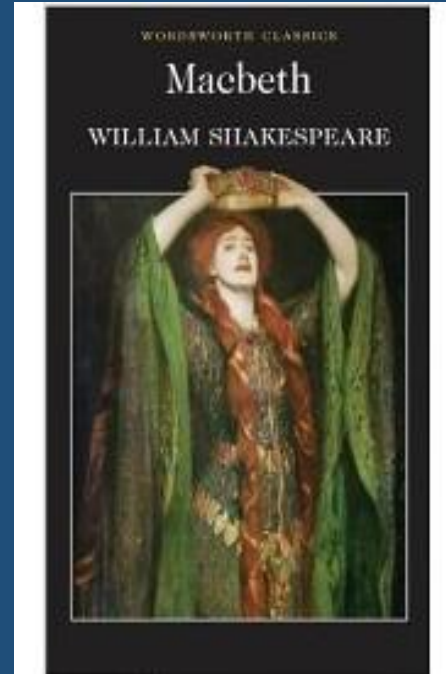
Students will be asked to:

- Show understanding of both texts
- Compare language features used for effect
- Write an extended piece of discursive writing

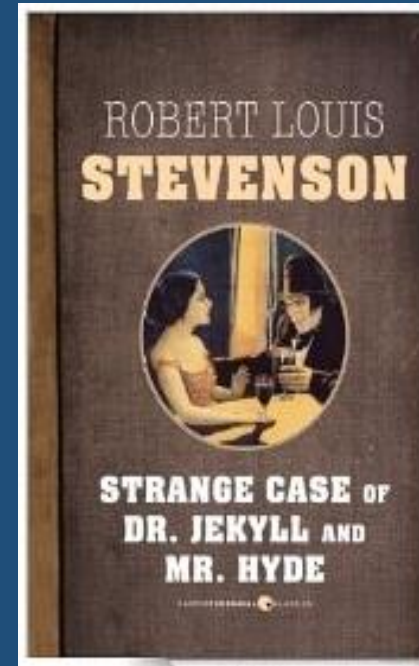
Literature
Paper 1:

Shakespeare
and the 19th
century
novel

Shakespeare

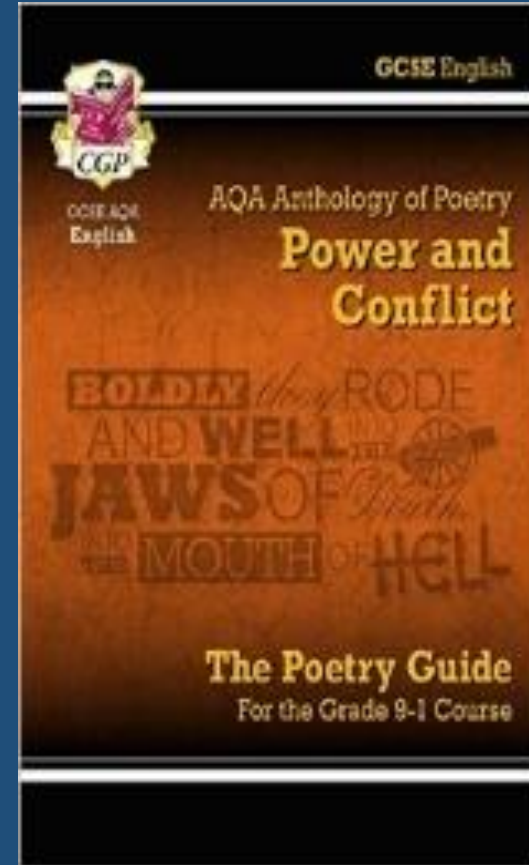
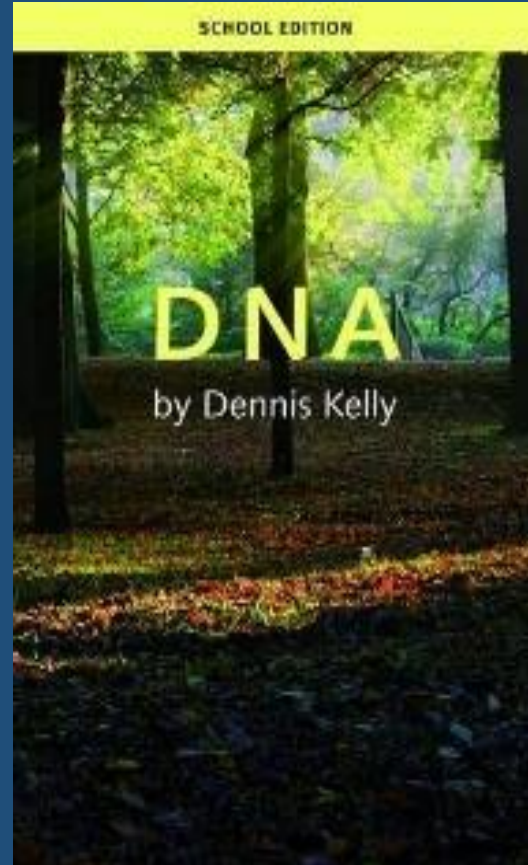


19th
century



Literature Paper 2:

Modern
Prose and
Poetry





MATHEMATICS DEPARTMENT



Success in Year 11



MATHEMATICS DEPARTMENT



Success in 2012

Top 7%



MATHEMATICS DEPARTMENT



Success in 2013

Top 3%



MATHEMATICS DEPARTMENT



Success in 2014

Top 1%



MATHEMATICS DEPARTMENT



Success in 2015

Top 1%



MATHEMATICS DEPARTMENT



Success in 2016

Top 1%



MATHEMATICS DEPARTMENT



Success in 2017

Top 1%



MATHEMATICS DEPARTMENT



Success in Year 11?

Top school?



MATHEMATICS DEPARTMENT



Outstanding teaching,
focussing on your
son's weaknesses



MATHEMATICS DEPARTMENT



Assessment highlighting your son's weaknesses and providing material to support independent study



MATHEMATICS DEPARTMENT



Focussing intervention where it is most
required



MATHEMATICS DEPARTMENT



But we need
your continued support



MATHEMATICS DEPARTMENT



100% Attendance
to all lessons



MATHEMATICS DEPARTMENT



Complete all homework



MATHEMATICS DEPARTMENT



Prepare for All
PPE Assessments



MATHEMATICS DEPARTMENT



Independent Study/Revision



REVISION APPS



- Tassomai for Science
 - PIXL Maths
- Tutor time and Independently



YEAR 11 SUCCESS EVENING



Summer Work

Two purposes:

1. To continue the learning
2. To further develop the independent learning skills required for Year 11

Each Student will receive a work pack from each teacher

Deadline for work to be completed at target grade standard

= Wednesday 6th September

List of work sent home to parents at end of next week.

YEAR 11 TARGET- Breaking the glass ceiling

